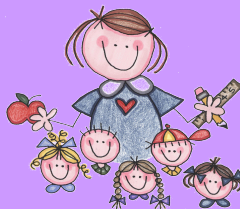


What can Queensmead Academy offer children with Special Needs?

- A commitment to helping every child make progress and be happy at school.
- A wide range of interventions to help children to make progress and to overcome the barriers to their learning.
- Adaptations in the classroom that help children to learn in whatever way suits them.
- Referral to agencies who can help and support children with SEN, such as Speech and Language Therapists or the Specialist Teaching Service.
- Regular reviews between parents, teacher and SENDCo to discuss the children's needs and progress.
- Monthly 'Special Breakfast' drop-in sessions, with information on a variety of topics and a chance to talk to the SENDCo and Inclusion Worker about any problems.



The SEN Team

Mrs Alison Newman Turner	SENDCo
Miss Beverley Dugdale	Deputy SENDCo
Mrs Helen Cank	SEN Teaching Assistant
Miss Jane Smith	SEN Teaching Assistant
Miss Kirsty Hargreaves	Inclusion Worker

Visit the SEN page on our website for more information about Special Needs at Queensmead.
www.queensmeadacademy.org/sen/



QUEENSMEAD PRIMARY ACADEMY

Special Educational Needs

Information for parents



At Queensmead we are committed to helping every child to make progress, develop friendships and life skills and be happy at school.

Some children need special help to achieve these things.

This leaflet explains what happens if a child has Special Educational Needs.

One of the Greenwood Dale Foundation Trust Group of Academies



What are Special Educational Needs?

Some children have difficulties that mean they don't learn in the same way or at the same rate as other children. For example, they may have a speech difficulty that makes it hard for them to be understood or problems with learning letters and sounds (phonics) that make learning to read difficult.

These children need special support to help them to learn and to achieve the very best they can.

They may need this support for a short time or for a longer period, but during this time they will be part of our Special Educational Needs (SEN) Register and we will keep a close eye on their progress, look carefully at what special support they need and keep in close touch with their parents.



What happens if my child has Special Needs?

If a child is thought to have special needs, this will be discussed with parents and the child may be placed on the SEN Register. This is a list the school keeps of children who need to be closely monitored and who may need additional help.

Very few children with SEN need one-to-one help in school. Most of them can make progress in class with teachers who are aware of their difficulties and know how to adapt their teaching to suit them.

Many (but not all) children on the SEN Register will have some small group time each week to help them with their particular difficulty (eg. a language group or a reading group).



Who do I talk to if I think my child has Special Needs?

Your child's class teacher

They will be able to listen to your concerns and discuss with you how your child is managing at school. They may discuss your concerns with the SENDCo or Deputy SENDCo

The SENDCo (Special Educational Needs & Disability Co-ordinator) - **Alison Newman Turner** **Beverley Dugdale (Deputy)**

Mrs Newman Turner and Miss Dugdale are always happy to discuss concerns with parents. You can arrange to see them by ringing the school office or by sending an email via the school website.

* CHANGES*

The law on Special Needs changed in September 2014. Key changes affecting parents include:

- Statements have been replaced with **Education, Health and Care Plans (EHCs)**. Parents can have a bigger role in the EHC process than they did with statements.
- School Action and School Action Plus have been replaced with a single category of **SEN Support**.
- Parents of children on the SEN Register must be given opportunities to meet with the teacher and/or SENDCO to discuss their child's progress at least three times a year.